

# Let's Talk Sickle Cell Disease and the Brain: The Mind Matters

**Tuesday, May 20, 2025  
6:00 PM - 8:00 PM**

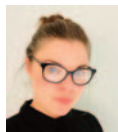
**This event will be held virtually via Teams.**

**You will receive an e-mail with instructions  
and the link to join one day prior to the session.**

## Activity Director:



**Christina M. Clay, MD**  
Director, Sickle Cell Disorders Program  
Division of Hematology and Medical  
Oncology  
MD Anderson Cancer Center at Cooper  
Cooper University Health Care  
Assistant Professor of Clinical Medicine  
Cooper Medical School of Rowan  
University  
National Alliance of Sickle Cell Centers  
Camden, NJ



**Lisa B. Carey, EdD**  
Assistant Director, Center for Innovation  
and Leadership in Special Education  
Department of Psychology  
Kennedy Krieger Institute  
Assistant Professor of School Education  
Johns Hopkins University School of  
Education  
Baltimore, MD



**Bridget G. Gibbons, MA**  
Division of Pediatric Psychology  
Department of Behavioral Psychology  
Kennedy Krieger Institute  
Psychology Associate, Department  
of Pediatrics  
Johns Hopkins Hospital  
Baltimore, MD



**Eboni I. Lance, MD, PhD**  
Medical Director  
Sickle Cell Neurodevelopmental  
Clinic and Research Center  
Department of Neurology  
Kennedy Krieger Institute  
Associate Professor of Neurology  
Johns Hopkins School of Medicine  
Baltimore, MD



**Erika Wesonga, PhD**  
Clinical Neuropsychologist  
Department of Neuropsychology  
Kennedy Krieger Institute  
Baltimore, MD

## Speakers:



**Morgan K. Bifano, PsyD**  
Division of Psychology  
Department of Behavioral Psychology  
Kennedy Krieger Institute  
Assistant Professor of Psychiatry  
and Behavioral Sciences  
Johns Hopkins School of Medicine  
Baltimore, MD



**Alicia Cannon, PhD, ABPP**  
Neuropsychology Director  
Sickle Cell Disease  
Neurodevelopmental Clinic and  
Research Center  
Center for Neuropsychological and  
Psychological Assessment (CNaP)  
Kennedy Krieger Institute  
Baltimore, MD

Preregistration is **REQUIRED** for this  
**FREE** CME activity.

**Register on-line:**

<https://cooperhealth.cloud-cme.com/letstalkmindmatters>

Or

Email **ALL** of the registration information requested below to: [CME@cooperhealth.edu](mailto:CME@cooperhealth.edu)

Or

Mail registration and payment to: Continuing Medical Education  
The Cooper Health System

2nd Floor, Suite N-300, 1 Federal Street, Camden, NJ 08103

Or

Fax registration form to: (856) 382-6495

**No registrations by telephone will be accepted.**

A notice will be sent to you to confirm your registration.

Pursuant to the Physician Self-Referral Law (Stark Law), Cooper is limited in the amount of nonmonetary compensation that it may provide to physicians. To ensure that it meets these regulatory limitations, Cooper documents the monetary value of your participation in each Cooper CME activity. If the monetary value provided to you would exceed these regulatory limits, you must pay to participate in the additional CME. Should you have any questions or wish to discuss this further, please contact Cooper's Compliance Department at (856) 968-7417. Thank you for your interest in the CME opportunities.

Please print.

Name & Degree:

First

M.I.

Last

Degree

Please check the status of your medical license: ☐ MD/DO - Active ☐ MD/DO - Retired

Please check if you are a ☐ Resident ☐ Fellow or ☐ PA/NP.

Address (required):

City/State/Zip:

Telephone: ☐ Home

☐ Work

☐ Mobile

Fax:

E-mail (required):

Company Name:

City/State:

Specialty/Occupation:

- ☐ Please indicate here if you DO NOT give The Cooper Health System permission to share limited contact information (learner name and degree, organization, and specialty) with any ineligible company or its agents.
- ☐ If you require assistance with hearing or vision to make this activity accessible to you, please check here and return your registration no later than May 13, 2025. We will contact you at the phone number you provide above.

## Accreditation/Designation/Disclosure:



The Cooper Health System is accredited by the Accreditation Council for Continuing Medical Education to provide continuing medical education for physicians. The Cooper Health System takes responsibility for the content, quality, and scientific integrity of this CME activity.

The Cooper Health System designates this live activity for a maximum of **2 AMA PRA Category 1 Credit™** per session. Physicians should claim only the credit commensurate with the extent of their participation in the activity.

All faculty, planners, and others participating in continuing medical education activities sponsored by The Cooper Health System are expected to disclose all financial relationships.

Cooper University Health Care is approved as a provider of nursing continuing professional development by the New Jersey Nurse Credentialing Center's Commission on Accreditation. Successful completion of activity requires attendance at full program, and completion of the program evaluation. There is no conflict of interest associated with this activity.

## Overall Learner Objectives:

- Understand the effects of the sickle cell disorders on brain development and cognition.
- Explain these effects of the sickle cell disorders to the patient and caregivers.
- Recognize the effects and refer for appropriate imaging and other cognitive interventions.
- Increase the provider's ability to modify interactions with the person with sickle cell to account for cognitive variations and challenges.

## Intended Audience:

The intended audience for this conference includes primary care physicians, internal medicine physicians, gynecologists, and pediatricians. Residents, fellows, physician assistants, advanced practice nurses, and any other health care professional with an educational need or interest in this topic may also attend.

**Cancellation Policy:** The Cooper Health System reserves the right to cancel this conference due to insufficient enrollment or other unforeseen circumstances.

**Please Note:** If you are unable to attend after registering, please contact us as soon as possible at (856) 382-6480.

## Need More Information?

Continuing Medical Education  
The Cooper Health System  
2nd Floor, Suite N-300  
1 Federal Street  
Camden, NJ 08103  
Tel: (856) 382-6480  
Fax: (856) 382-6495  
E-mail: [CME@cooperhealth.edu](mailto:CME@cooperhealth.edu)



Cooper Medical School  
of Rowan University



Making Cancer History™

**CONTINUING MEDICAL EDUCATION**